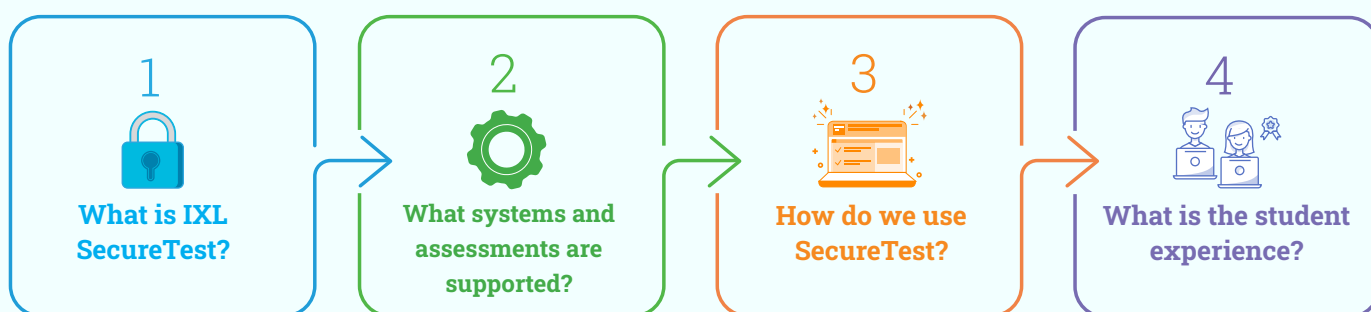




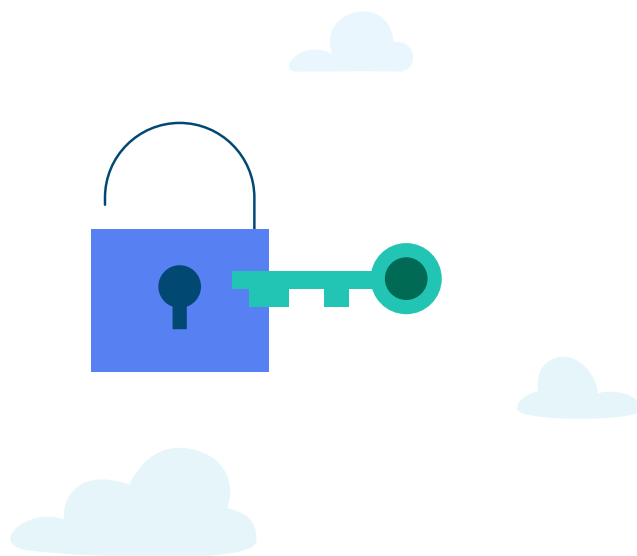
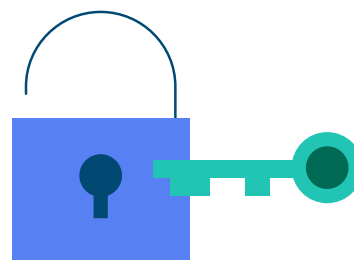
This guide walks you through IXL SecureTest and how it supports secure, reliable assessment experiences. You'll find answers to common questions about system compatibility, supported assessments, setup, and what students can expect on test day—so you can get started with confidence.



1 What is IXL SecureTest?

IXL SecureTest helps ensure the integrity of IXL assessment results by limiting devices to approved testing functions. When enabled, SecureTest prevents students from accessing tools that could compromise test validity—including additional browser tabs; copy, paste, and screenshot controls; AI-powered extensions; and other non-essential programs.

IXL SecureTest is powered by LockDown Browser® from [Respondus](#).



2 What systems and assessments are supported?

You can activate SecureTest on the following systems for the following assessments.

Supported systems:

- Chromebook
- Windows
- MacOS



Because of installation requirements, SecureTest works best on school-managed devices rather than student-owned devices.

Supported assessments:

- IXL LevelUp™ Diagnostic in Benchmark mode
- IXL Universal Screeners
- Common Assessments

For Common Assessments, administrators can choose to enable SecureTest for specific assessments during creation. For LevelUp Benchmarks and Universal Screeners, enabling SecureTest applies to all assessments of that type.

3 How do we use SecureTest?

To enable SecureTest, contact your IXL Account Manager. They'll confirm device compatibility, help determine where it's needed, and guide setup and activation.

To make changes after activation, contact your Account Manager.



4 What is the student experience?

When a high-stakes assessment is required to be taken with SecureTest, students begin by signing in to IXL as usual using their system's default browser. When they start the assessment, it opens automatically in SecureTest, which launches in full-screen mode and closes any unapproved programs.

