



# SmartScore Goal Poster

IXL's SmartScore is a special scoring system that gives you the best possible information on a student's true understanding of a skill. Use the SmartScore to set goals for your students and keep them motivated.

## SETTING SMARTSCORE GOALS

- The IXL SmartScore ranges from 0-100 but is not a percentage score. It takes into account several factors, including questions answered correctly and incorrectly, question difficulty, recent answers, and consistency.
- As the SmartScore goes up and down, questions become harder or easier, which ensures students are engaged at the perfect level!

### *Best practice:*

- When introducing a concept, set a SmartScore goal of 80 (proficiency) or 90 (excellence) for your students. If you have students who are ready for an extra challenge, have them strive for mastery (100)!

### *Pro Tip:*

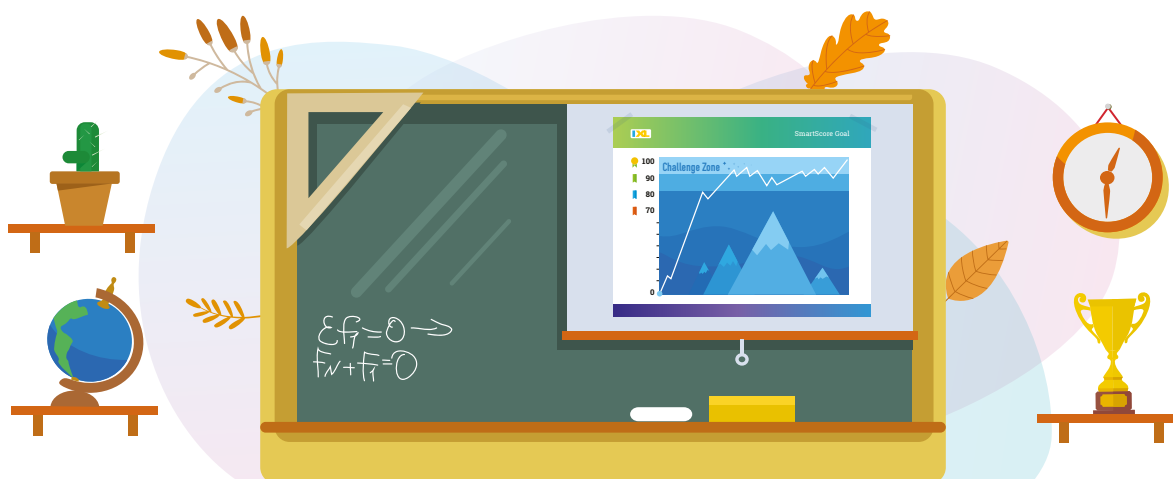
- Set SmartScore goals for your suggested skills! On your [Profile & settings](#) page, you can set SmartScore goals for your whole class, specific groups, or even individual students to further differentiate practice.



## SMARTSCORE GOAL POSTER

Display this SmartScore poster in your classroom to help you:

- Visually explain IXL's SmartScore to students and parents, showing them that their score may fluctuate, but they can always reach their goal.
- Communicate SmartScore goals to students—for example, by drawing a star next to the score you want them to aim for!





SmartScore Goal

