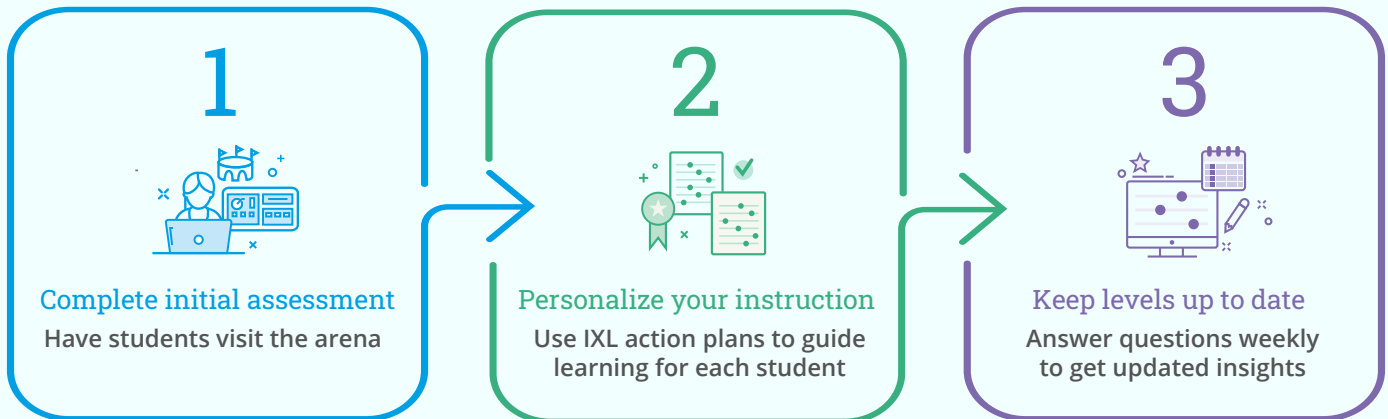




## Steps to successful implementation

The IXL LevelUp™ Diagnostic in Real-Time mode helps you pinpoint students' grade-level proficiency in key strands and provide immediate insights for daily instruction. Getting started is simple!



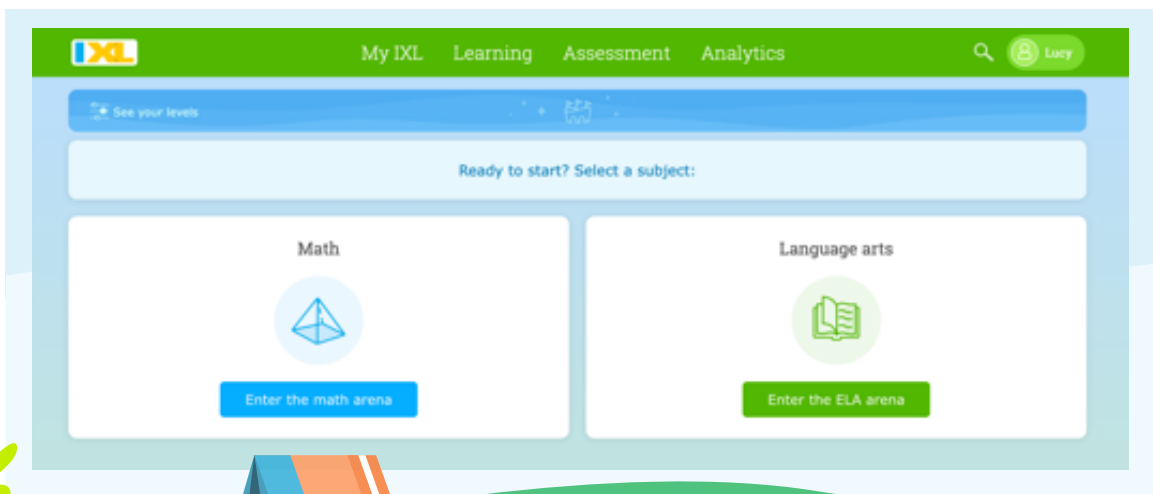
## Let's take a closer look at how you can get started with IXL's real-time assessments

### 1 Complete initial assessment

#### Visit the arena

Have students answer questions until all of their levels are up to date. It only takes about 45 minutes for students to get full diagnostic levels in one subject.

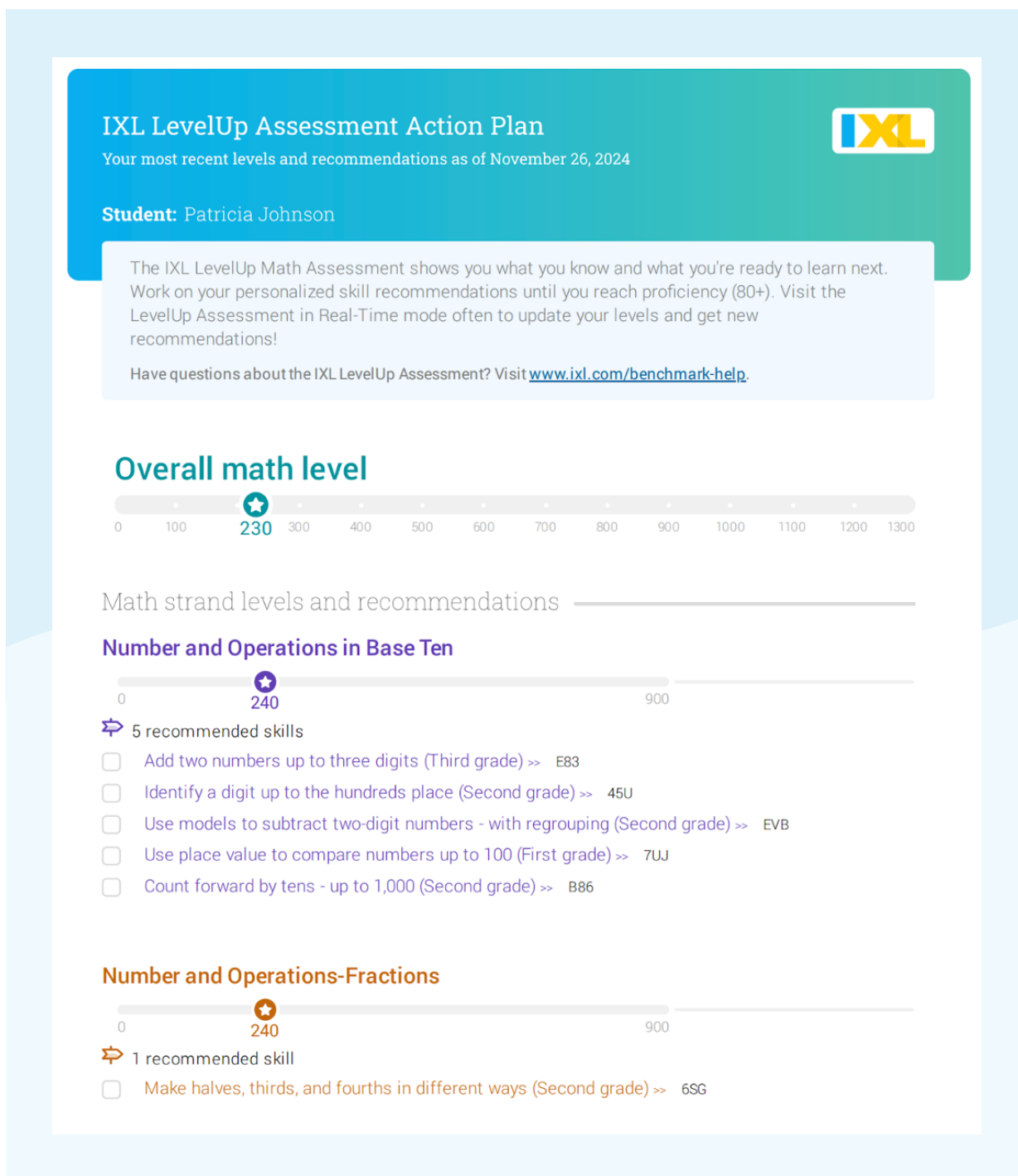
**Tip:** Help students get started with the LevelUp Diagnostic with this [quick-start guide!](#)



## 2 Personalize your instruction

### Use IXL action plans to guide learning for each student

Using insights from the assessment, IXL creates a personalized action plan for each student. Have your students click directly on their recommended IXL skills to start closing gaps and making progress right away.



**Tip:** Levels correspond to grade levels. For example, a score of 360 indicates the student understands about 60% of 3rd grade material.

### 3 Keep levels up to date

IXL's real-time assessments can give you insights into your students' knowledge levels in between benchmark windows.

#### Answer 10-15 questions in the arena per week

With just a handful of questions each week, your students' levels will update periodically and ensure you always have relevant insights on how to support them. With the LevelUp Diagnostic, student levels update about every 40 questions.

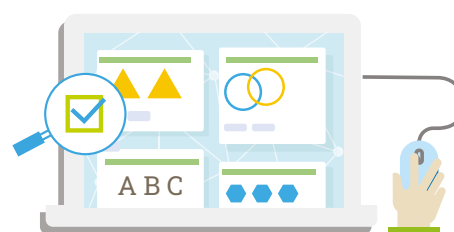
- **ELA assessment:** Students in grades 2-12 who have completed only a Reading Benchmark or only a Writing & Language Benchmark will need to spend about 30 minutes in Real-Time mode to receive an overall ELA score. Then, they can update scores in Real-Time mode with just 10 questions a week!

The Students Quickview report shows you the number of questions students have answered per session in the arena. You can also visit the Live Classroom report to monitor assessment progress in real time and keep students on track.



#### Aim for two skills proficient per week

Encourage students to work on skills from their action plan until they reach proficiency (a SmartScore of 80). Research shows students perform better on state assessments when they reach proficiency in [two skills per week](#).



#### Monitor progress

The Progress and Growth report shows you each student's starting level, current level, and overall growth.

Identify students who are not achieving an average monthly growth of +10 and work with them to provide appropriate support and interventions. To get always-accurate data, make sure students are updating their levels weekly!

