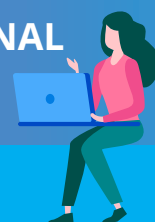


## STEPS TO SUCCESSFUL IMPLEMENTATION

IXL video tutorials provide instructional math support for most math and English language arts skills and foster independent learning. Here's how you can incorporate them into each lesson!



## LET'S TAKE A CLOSER LOOK AT HOW IXL'S INSTRUCTIONAL VIDEOS POWER INDEPENDENT LEARNING.



## 1.

## Plan your lesson

## Find the IXL skill that matches your objective

Review your lesson plan and search for a skill that supports your instruction. You can find these skills by scanning the Grades pages, or by using your IXL skill plan.

**Grades View:**

Get easy access to all skills for your grade level.

**Skill Plans:**

Check out ready-made IXL skill plans for skills that perfectly match your textbook or standards.

**Learning** Diagnostic Analytics Inspiration MEMBERSHIP

Recommendations Skill plans Math Language arts Science Social studies Spanish Standards Awards

View by: Grades Topics Skill plans

## Seventh grade math

IXL offers hundreds of seventh grade math skills to explore and learn! Not sure where to start? Go to your personalized Recommendations view to find a skill that looks interesting, or select a skill plan that aligns to your textbook, state standards, or standardized test.

**A. Number theory**

- 1 Prime or composite
- 2 Prime factorization
- 3 Multiplicative inverses
- 4 Divisibility rules
- 5 Greatest common factor
- 6 Least common multiple
- 7 GCF and LCM: word problems
- 8 Sort factors of numerical expressions

**K. Proportional relationships**

- 1 Find the constant of proportionality from a table
- 2 Write equations for proportional relationships from tables
- 3 Identify proportional relationships by graphing
- 4 Find the constant of proportionality from a graph
- 5 Write equations for proportional relationships from graphs

**V. Linear functions**

- 1 Find the slope from a graph
- 2 Find the slope from two points
- 3 Find a missing coordinate using slope
- 4 Find the slope from an equation
- 5 Graph a line using slope
- 6 Write a linear equation from a graph
- 7 Identify linear and nonlinear functions

[Jump to lessons](#)

# 2.

## Deliver your lesson

### Whole class instruction

Use IXL video tutorials as an introduction to your daily lesson, or as a bite-sized review of select math and ELA skills at the end of a unit.

### Individual or small group work

If students get stuck while working in small groups or need a refresher when working independently on a skill, they can self-remediate by watching the video tutorial. This way, they can reinforce what they've learned from the day's lesson and move forward with confidence.

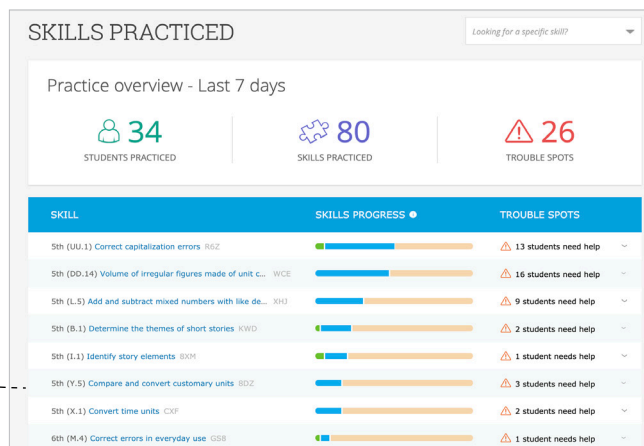
### Assign homework

Assign IXL skills by clicking the star next to the skill. Students can access the tutorials and continue independent learning at home, while parents can rely on IXL videos as an additional resource for supporting their child.

# 3. Check for understanding

## Skills Practiced

See the exact skills your students are working on and how well they're doing in each skill. Use the Skills Practiced report to quickly assess which skills may need to be reviewed, and customize the report's date range to see progress at any time.



## Trouble Spots

Use the Trouble Spots report to identify students that may be struggling with the lesson. The groupings provided can help you target and reteach learners in follow-up lessons.

